

# Chelsea Mansion Coloring and Activity Book

{courtesy of the Muttontown Historical Society // [stantiquesinc@gmail.com](mailto:stantiquesinc@gmail.com)}



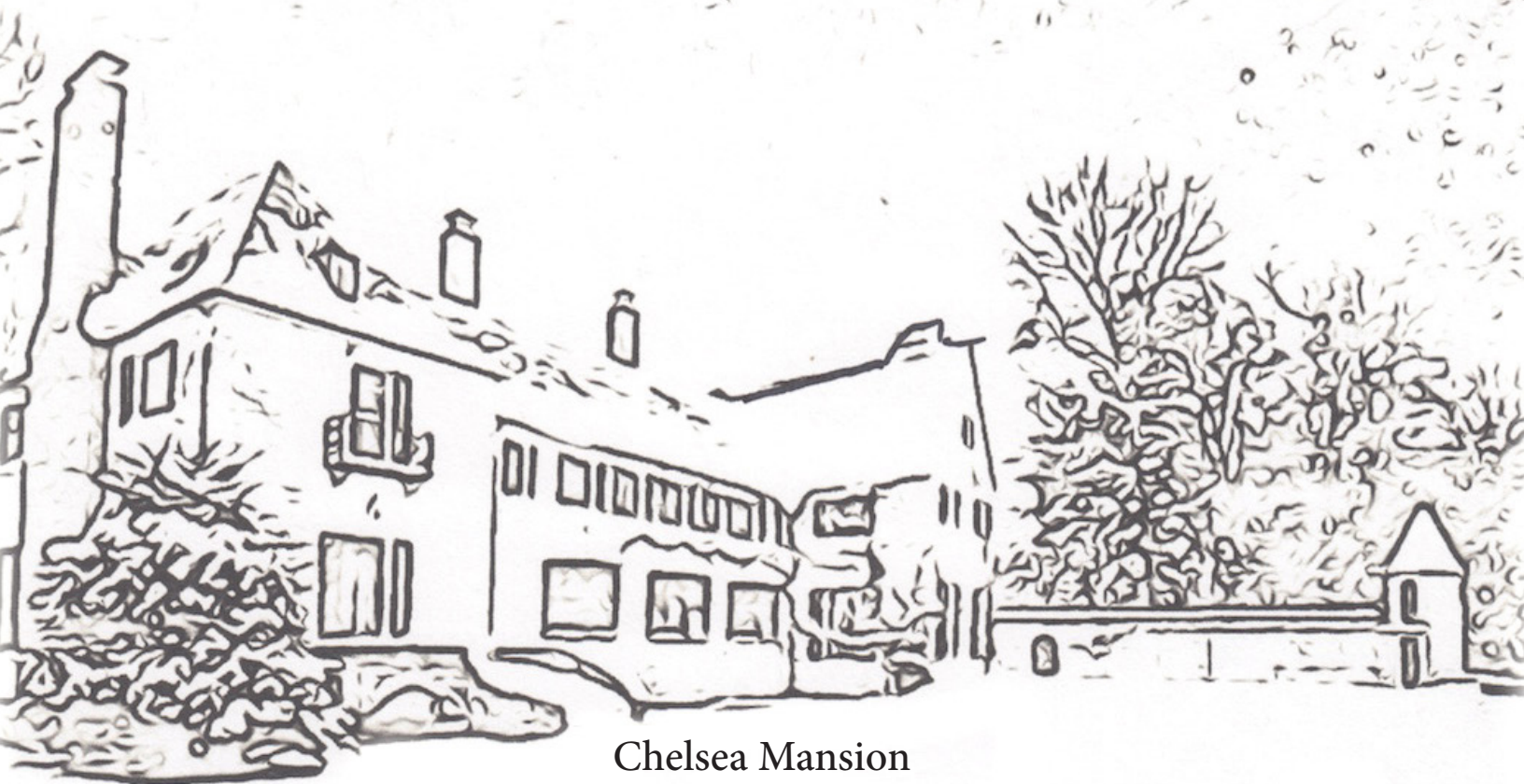
Chelsea Mansion  
Spring, 1960s



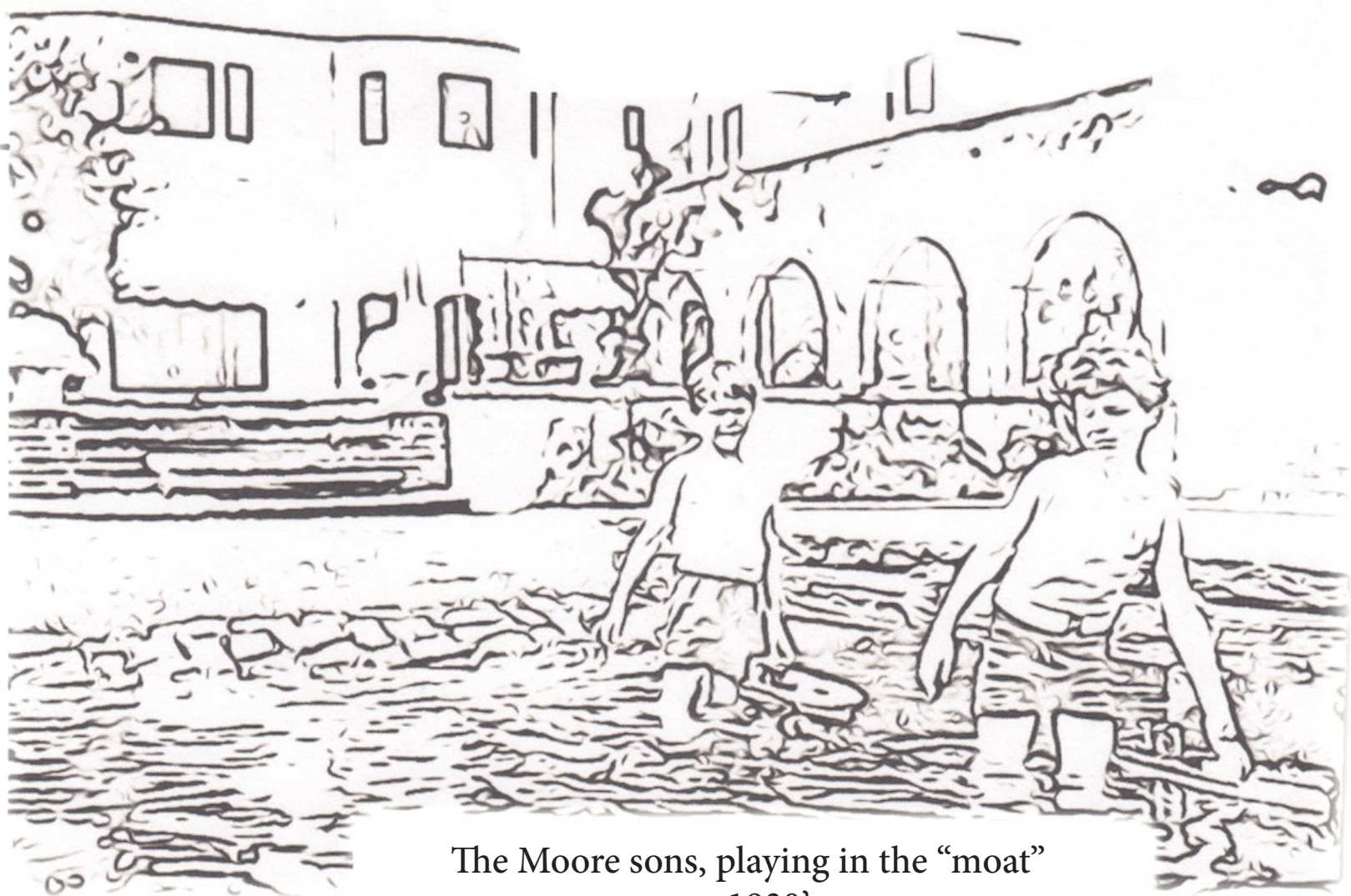


Moore Family  
ca. 1930s



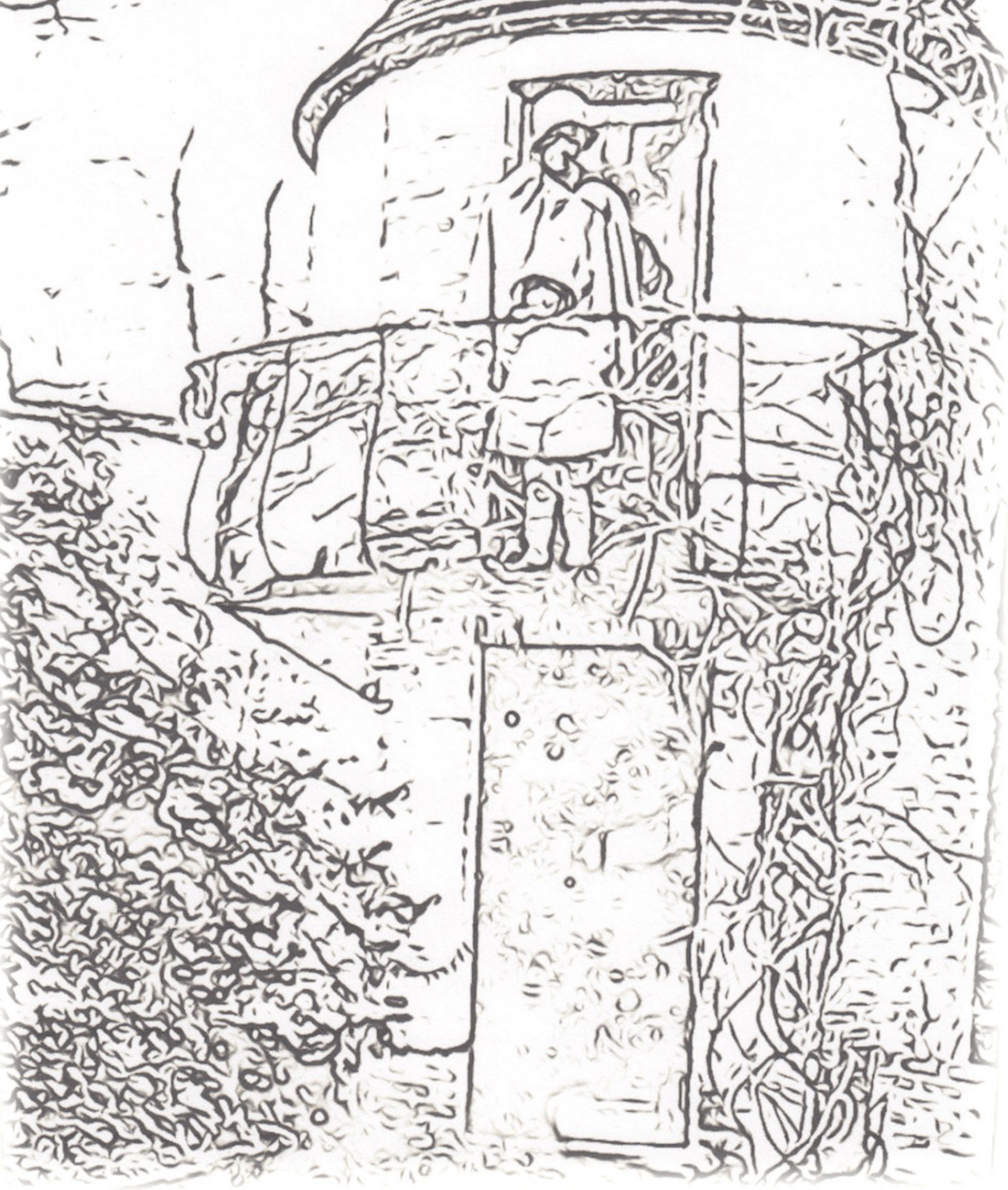


Chelsea Mansion  
Winter, 1960's



The Moore sons, playing in the "moat"  
ca. 1930's





Alexandra and Linda Moore  
ca. 1930s





# CHELSEA MANSION FACTS

## Courtesy Muttontown Historical Group

- 1.) Chelsea was the home of distinguished lawyer and WWI war hero Benjamin Moore and his wife, Alexandra.
- 2.) Benjamin Moore was the first Mayor of Muttontown, elected in 1931 at an election in which 21 votes were cast.
- 3.) Mr. Moore came from a distinguished, socially prominent family. His great-great grandfather, Clement C. Moore, wrote the poem A Visit from St. Nicholas, more commonly referred to as The Night Before Christmas, first published in 1823.
- 4.) Mrs. Moore's style and attention to detail is on display across the entire estate, especially in Chelsea's massive, ornate gardens, which were influenced by the legendary royal courtyards of the United Kingdom.
- 5.) Much of the inspiration for Chelsea's design was based on architectural details observed by the Moores during their world travels, which included a trip down the Yangtze River in China during their year-long honeymoon.
- 6.) Chelsea was built by the prominent architecture firm Delano and Aldrich. Among William Adams Delano's other famous architectural projects were Oheka Castle, the Quadrangle at Yale's Sterling Divinity School, two separate renovations of the White House, and several other nearby Muttontown homes, including his own. He was also on the planning boards both of both the 1949 World's Fair and the original layout of LaGuardia Airport.
- 7.) A parlor features a stunning 85 foot sepia-toned mural, entitled "Market in a Mediterranean City," painted by Catalan muralist Josep Maria Sert. The mural was painted in oil over white gold leaf, conveying a refined Spanish flavor.
- 8.) The grounds and mansion at Chelsea required intensive upkeep. The full-time live-in staff included 12 servants, supplemented by many day workers. The entire staff was coordinated by the Moore's longtime butler, Frank Ogilvie, whose job it also was to keep the help out of Ms. Moore's sight.
- 9.) By the mid '60s, Ms. Moore had decided that she wanted to gift Chelsea to Nassau County upon her death. Her donation of property combined with a generous donation from the Christie Estate to comprise the 568 acre Muttontown Preserve.
- 10.) In 1979, Chelsea was added to the National Register of Historical Places.

{Contact: Muttontown Historical Group, Stan Jackson [stantiquesinc@gmail.com](mailto:stantiquesinc@gmail.com)}

## Chelsea Mansion True or False

1.) Chelsea's Benjamin Moore was involved with the paint company that bears his name to this day.

TRUE\_\_\_ FALSE\_\_\_

2.) Chelsea is on the National Register of Historical Places.

TRUE\_\_\_ FALSE\_\_\_

3.) The grounds at Chelsea Mansion originally sat on 125 acres.

TRUE\_\_\_ FALSE\_\_\_

4.) Muttontown Preserve is Nassau County's largest nature preserve.

TRUE\_\_\_ FALSE\_\_\_

1.) FALSE - although many newspapers and news outlets have made that mistake!  
2.) TRUE - since 1979.  
3.) TRUE. Now, it sits on 42, with the remaining acreage having been donated to Nassau County.  
4.) TRUE - Muttontown Preserve stretches over 550 acres!